

CDMC

Trip Report

[Home](#)
[Future trips](#)
[Past trips](#)
[Trip guidelines](#)
[Conditions](#)
[Routes >](#)
[Forum](#)
[Membership](#)
[Reference >](#)
[FAQ](#)
[Photo contest](#)
[What's new](#)
[Member](#)
[Login](#)
[Changes](#)
 today

 yesterday

 < 7 days

 < 30 days

Gem Lake Viewpoint (mountaineering)

[return to Reports list](#)

Fri Nov 09, 2012

Leader: **William Wright**

Co-Leader:

A stunning 12 hour trek that started & finished with headlamps.....

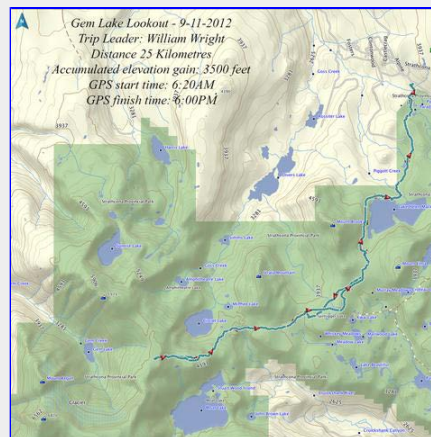
It was an early rise to get to our meeting spot at Raven lodge by 600am. The crisp -5 temp had us bundled up and on our way shortly after 6. We set out sporting head lamps for the first hour until the sunrise just after 7. The snow was light and dry and made for fairly safe walking in boots although one member chose to wear snowshoes for the journey to Circler lake. Numerous frozen tarns and ice laden trees made for great photo opportunities along the way . The scramble up from Circler lake was somewhat tricky with the snow covered trail, but we made it up without mishap.

We sat and had a quick lunch at the Cairn with 360 views of the surrounding mountains with a brilliant backdrop of stunning blue skies. So incredibly beautiful!!! William the "task master" had us packed up and heading back down the mount in no time flat. With the temperatures hovering around -5 we didn't mind getting moving to keep warm.

The temperature remained cold, but the fluctuation of a few degrees made the snow texture change slightly, making the scramble back down to Circler a little trickier and somewhat more slick, but we all made it in one piece.

We made it back to Helen MacKenzie lake just before the fading light diminished and we were back to being guided by our headlamps once again. We arrived back at our vehicles around 6pm, a little tired but I can't think of a better way to spend a sunny Fall Friday.

[Check out these pictures](#)



GPS route map
[Tim Penney photo]



Jutland on the right and the AE ramp ahead of us
[Tim Penney photo]



*Solo Strider on the Regan Ramp.
[William Wright photo]*



*Frozen Flora on the Ridge above Gem Lake.
[William Wright photo]*



*Summit Shot at the AE - Jutland Ramp Cairn.
[William Wright photo]*



*Windswept snow view of Castlecrag and the Alberni Valley in the distance
[Tim Penney photo]*



*Midday summit lunch break
[Tim Penney photo]*



*Brilliant sunny day view of frozen tarns and Castlecrag
[Tim Penney photo]*



*Heading down from the ridge
[Tim Penney photo]*



*Hairtrigger Lake in the evening light
[Tim Penney photo]*

Report contributors: Kim B, Tim P, William W,

Participant list (3 of 3): Kim B, Tim P, William W,

[return to Reports](#)