

CDMC

Trip Report

[Home](#)
[Future trips](#)
[Past trips](#)
[Trip guidelines](#)
[Conditions](#)
[Routes >](#)
[Forum](#)
[Membership](#)
[Reference >](#)
[FAQ](#)
[Photo contest](#)
[What's new](#)
[Member](#)
[Login](#)
[Changes](#)

- today
- yesterday
- < 7 days
- < 30 days

Divers & Rossiter Lakes (hiking) [return to Reports list](#)

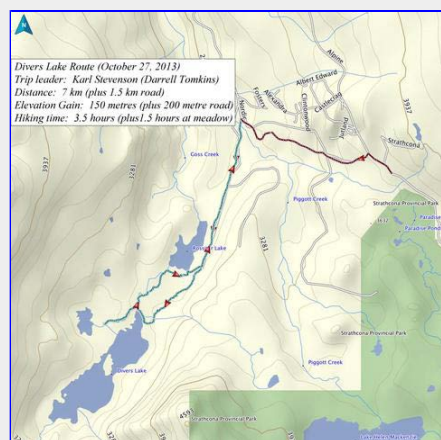
Sun Oct 27, 2013

Leader: **Karl Stevenson**

Co-Leader: **Darrell Tomkins**

Another beautiful day in Strathcona Park was enjoyed by a party of 18. The road down had some rough spots, so only two vehicles went down to Nordic Road, about 1.5 km down at the bottom of the 650 ft hill. Most people hiked down and picked up packs and gear for the 7 km hike to Rossiter and Divers Lakes and back. The hike went along a section of old road by Rossiter Lake and then turned into old growth forest of yellow cedar, mountain hemlock and white pines on a lovely soft trail. Reaching the north end of Divers Lake, we picked our way along the stony lake edge to a place where an easy crossing of the full creek was made. Then we descended to an extensive fen of grasses and snags where we were set loose to wander for 1.5 hours. Photographers stalked the meadows, and artists sat in the sun with their sketchbooks, while others napped in sunny niches away from the cool wind that blew up from the north. Karl chose a different route through the woods for the return to Rossiter Lake and maintained a comfortable pace to keep the group together back to the road.

The opportunity to relax in the warm October sun was appreciated by everyone, and Tim Penney is acknowledged for suggesting this lovely trip and recruiting Karl Stevenson as Leader.



Tim's GPS track with today's stats

[Darrell Tomkins photo]



Divers Lake with a view to Strata Mountain
[Tim Penney photo]





Fall Colours !
[Chris Carter photo]

*Crossing Goss Creek at the
north end of Divers Lake*
[Darrell Tomkins photo]



The fen with Strata Mountain
[Darrell Tomkins photo]



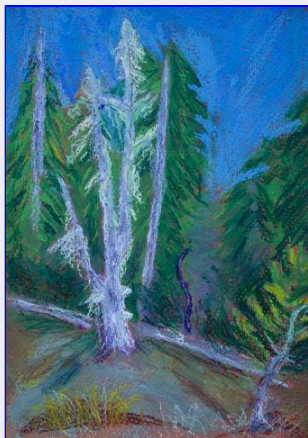
Lunch at the meadow
[Darrell Tomkins photo]



Old snag in the meadow grass
[Tim Penney photo]



Three layers of grasses
[Tim Penney photo]



Lunch time sketch.
[Chris Carter photo]



Strata Mountain in ink
[Denise Allard photo]

Report contributors: Denise A, Chris C, Tim P, Darrell T,

Participant list (18 of 18): Denise A, Sylvia A, Marilyn A, Chris C, Linda C, Larry C, Mary Jean C:*guest*, Ian H, Susan H, Brenda O, Garry O, George P, Tim P, Karl S, Jana T:*guest*, Darrell T, Otto W, Philip Z,

[return to Reports](#)