

CDMC

[Home](#)
[Future trips](#)
[Past trips](#)
[Trip guidelines](#)
[Conditions](#)
[Routes >](#)
[Forum](#)
[Membership](#)
[Reference >](#)
[FAQ](#)
[Photo contest](#)
[What's new](#)
Member
[Login](#)
Changes

- today
- yesterday
- < 7 days
- < 30 days

Trip Report

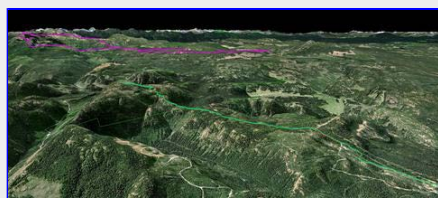
Mt. Becher (hiking) [return to Reports list](#)

Sat Sep 11, 2010

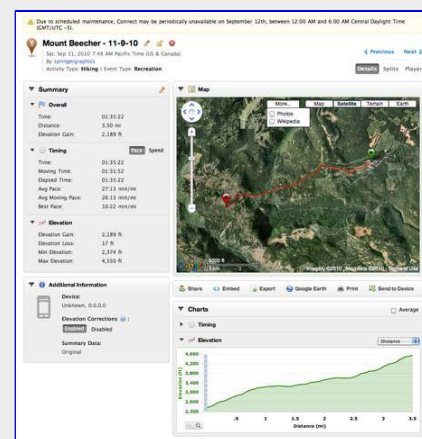
 Leader: **Len Wells**

Co-Leader:

Today a group of four met at the Courthouse at 7am. Determined to do something outside, after great consideration, and moving our vehicles to a location that would ensure they would still be there on our return, we headed for Mt Becher (after realizing that there is only a 2hr parking at the courthouse Monday-Saturday). With the skies looking optimistic and some talk about going to Arrowsmith, I didnt concede to the peer pressure, and we continued to the start of our quick dry ascent. Tim and Carol, time 1hr and 31min, Peggy and I, 1hr and 40min. After the group photo with Tims handy work, and a quick tea break just off the summit, the rain began to move in fast, so we were off, back at the car by 12:00, and having coffee at Mudsharks cafe in Courtenay by 12:30. Thanks to all for coming out on a rather questionable day.(Len)



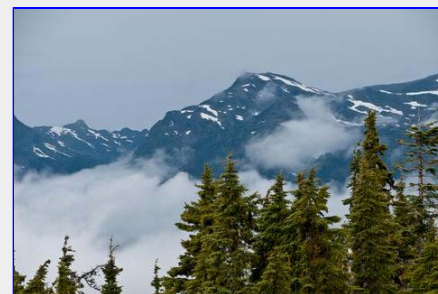
Satellite overlay with track in green. The magenta track is from a trip last week showing the Castlecrag circuit. These tracks a
[Tim Penney photo]



Trip statistics
[Tim Penney photo]



View from the top of the old ski hill
[Tim Penney photo]



Looking across to Castlecrag and Mount Frink
[Tim Penney photo]



*North summit of the Comox
Glacier*
[Tim Penney photo]



Looking down to Comox Lake
[Tim Penney photo]



*The full compliment thanks to
Photoshop editing*
[Tim Penney photo]



*Beautiful clouds and lighting
before it socked in completely*
[Tim Penney photo]



Taken before the fog arrived
[Tim Penney photo]



*Coffee break below the summit
and out of the wind*
[Tim Penney photo]

Report contributors: Tim P, Bob S, Len W,

Participant list (4 of 4): Peggy C, Carol H, Tim P, Len W,

[return to Reports](#)