

# CDMC

[Home](#)
[Future trips](#)
[Past trips](#)
[Trip guidelines](#)
[Conditions](#)
[Routes >](#)
[Forum](#)
[Membership](#)
[Reference >](#)
[FAQ](#)
[Photo contest](#)
[What's new](#)
[Member](#)
[Login](#)
[Changes](#)

- today
- yesterday
- < 7 days
- < 30 days

## Trip Report

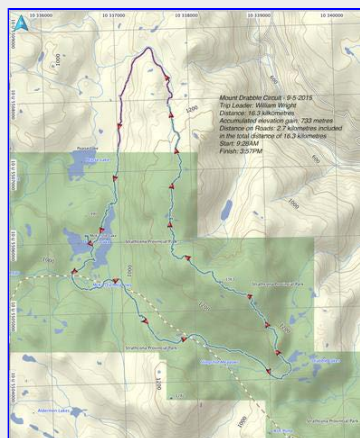
**Mount Drabble (hiking)**
[return to Reports list](#)

Sat May 09, 2015

 Leader: **William Wright**

 Co-Leader: **Don Kulak**

Saturday morning at 9:00 am saw 9 eager hikers meet at the Mt Washington turn off parking area. Car pooling was promptly sorted out and a convoy of three vehicles set off up the hill, turning off the hard top at the 11 km mark. A decent logging road route and soon we were at our strategic parking spot to begin our hike. Boots laced up and packs shouldered we were off by 9:30 am, first to McKenzie Lake and then a visit to the cabin beside Douglas Lake. A nice recently brushed out trail took us around the far side of McKenzie Meadows. Then a stop at a view point for water and snacks. A good steady pace soon had us past Drabble Lakes and climbing for the top of Drabble Mountain. Arriving at the summit about 2:00 pm, stopping for lunch and photos. From the summit it was an undulating route crossing numerous snow fields and past many picturesque tarns. Kudos to Kathryn and Linda for collecting a dozen thoughtlessly discarded beer cans that had been left to mar one of these beautiful ponds. Unfortunately they walk among us. At the end of the ridge we began our steady decent to the logging road which was reached at the 4:00 pm mark. Twenty minutes got us back to our brilliantly place vehicles and heading home. Many thanks to William for an interesting route enjoyed by all.



GPS track with statistics.  
 [Tim Penney photo]



The group looking at the  
 memorial to Douglas.  
 [Linda Hamilton photo]

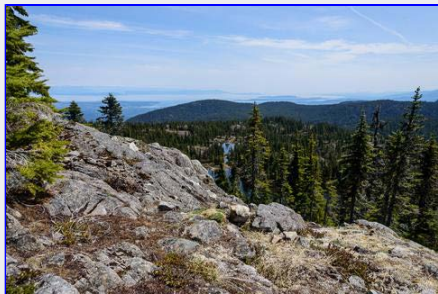


Willow Catkins already past



On the bypass around

*their prime and about 1 month earlier than last year.*  
[Tim Penney photo]



*Looking back down to the Drabble Lakes.*  
[Tim Penney photo]

*McKenzie Meadows.*  
[Tim Penney photo]



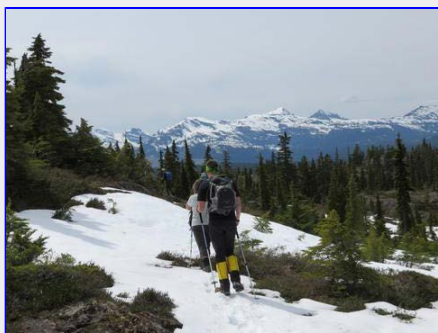
*Looking back down the south east ridge from just below the summit.*  
[Tim Penney photo]



*Some snow as we approached the Drabble summit area.*  
[Tim Penney photo]



*Summit Panorama.*  
[Thomas Mclellan photo]



*Heading down the west side from the summit.*  
[Linda Hamilton photo]



*Lucky for some, but messy for others. Collecting beer cans left behind by inconsiderate snowmobilers.*  
[Tim Penney photo]

**Report contributors:** Linda H, Don K, Thomas M, Tim P, William W,

**Participant list (9 of 9):** Mary F, Linda H, Gary H, Brian J, Don K, Kathryn L,  
Thomas M, Tim P, William W,

[return to Reports](#)